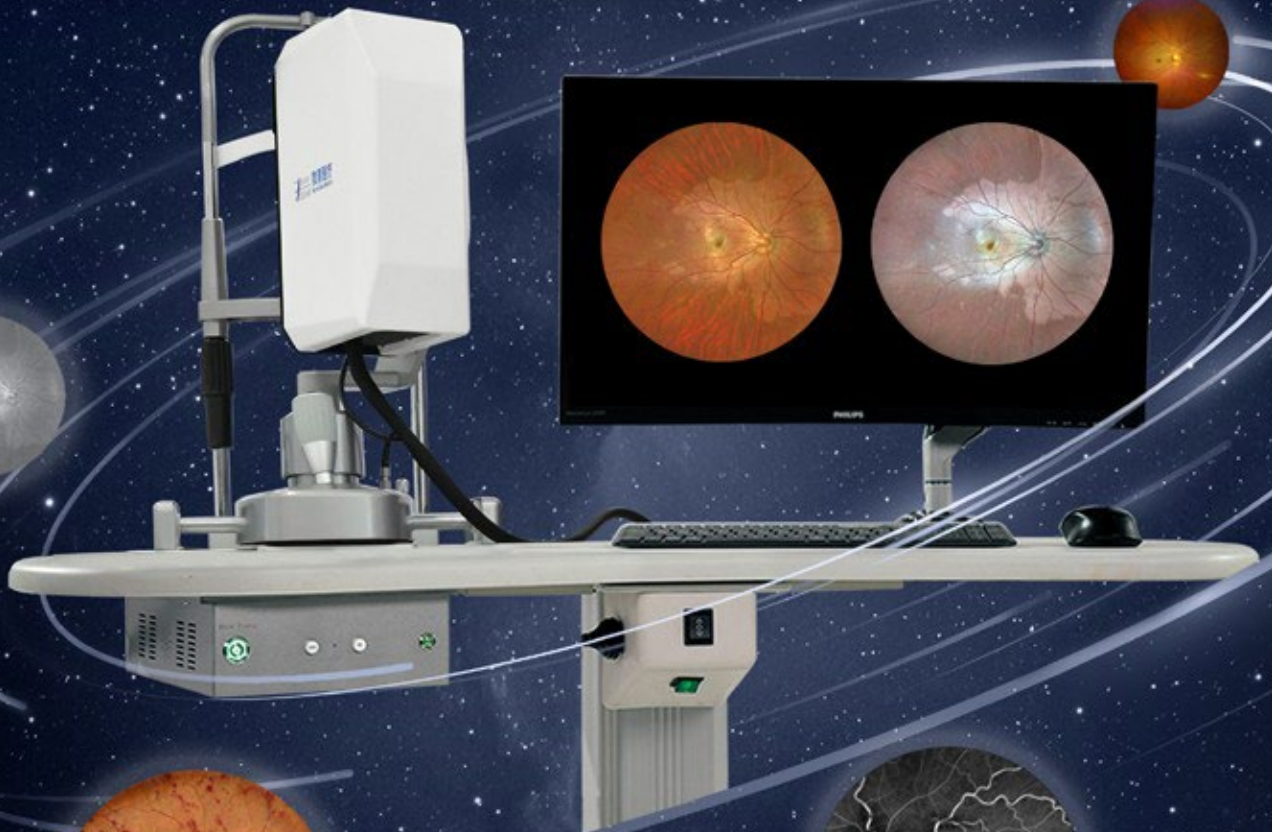


Apollo

ULTRA-WIDE-FIELD
NON-MYDRIATIC
FUNDUS CAMERA



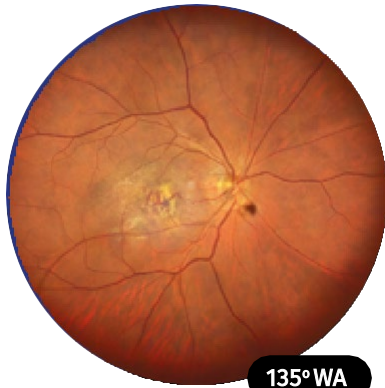
LUMIBIRD®
MEDICAL

Multimodal retinal imaging

Apollo

■ OPTICAL ZOOM WITH NO LOSS OF QUALITY

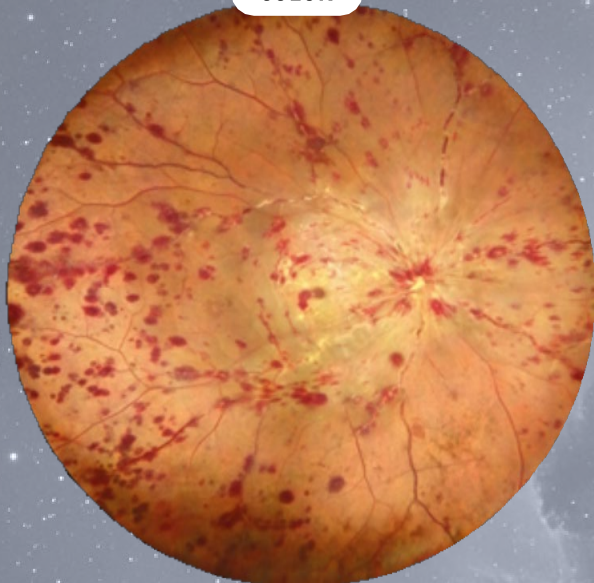
One click to change the field of view and zoom in on areas of interest.



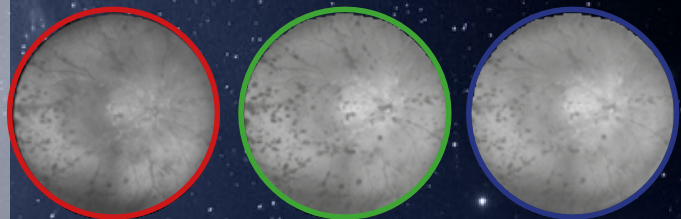
The Apollo's advanced optical zoom function offers multiple magnification levels, allowing every aspect of retinal health to be captured with precision and clarity:

from ultra-wide field (UWF) for comprehensive retinal views to ultra-high definition (UHD) for precise visualization of fine details.

COLOR



■ LASER TECHNOLOGY RVB CONFOCAL



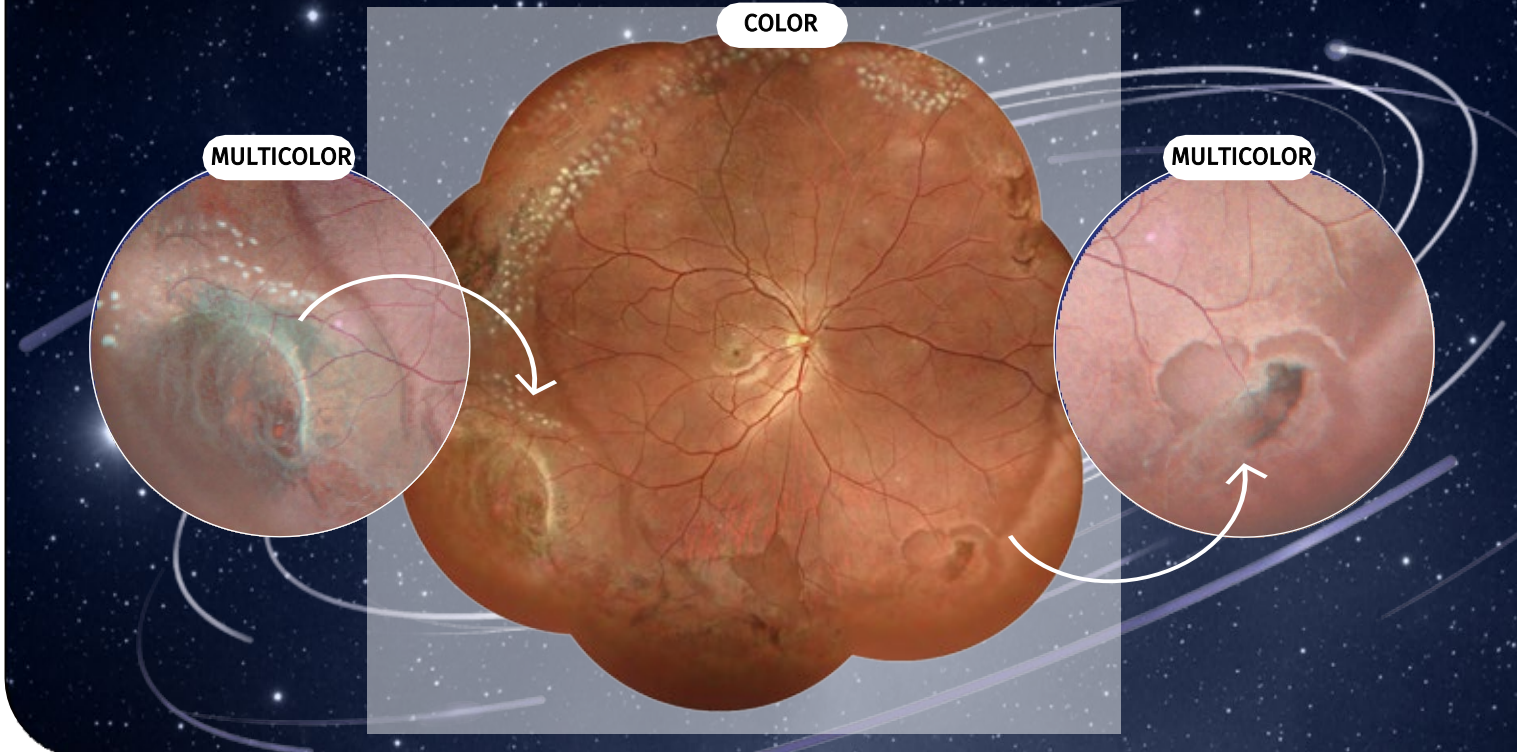
Apollo's ultra-wide-field RGB image combines three confocal laser sources, delivering maximum image fidelity and contrast.

Ultra-wide-field fundus camera

- VIEW UP TO 240°:
 - COLOR
 - MULTICOLOR

Capture two to nine images and easily combine them into a panoramic view thanks to fast and precise joystick control.

Achieve ultra-wide-field (UWF) imaging with quick and easy 135° retinal capture in all modalities: COLOR, MULTICOLOR, AF, FFA, ICGA, and create panoramic views up to 240°.



Optimized imaging for small pupils



≥ 2 mm

3 AVAILABLE CONFIGURATIONS

CSLO



COLOR

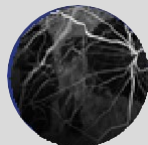


MULTICOLOR



FAF

CRO



FFA



COLOR



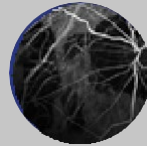
MULTICOLOR



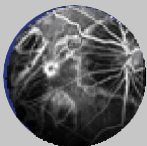
FAF

CRO PLUS

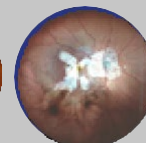
FFA



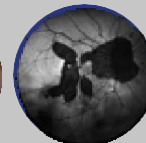
ICGA



COLOR



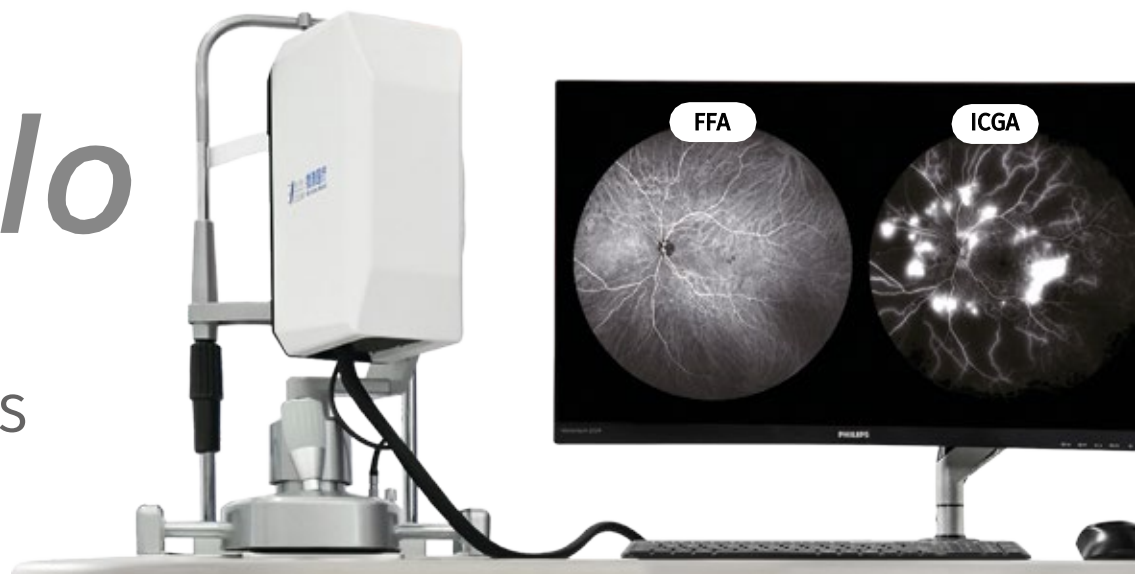
MULTICOLOR



FAF

Apollo

TECHNICAL SPECIFICATIONS



APOLLO			
	CSLO	CRO	CRO PLUS
Type	Ultra-wide-field non-mydratiac fundus camera		
Types of images	Multi-colour (Red, Green, Blue) Infrared (IR) Red-free (RF) Fundus autofluorescence FAF (B-AF, G-AF)	Multi colour (Red, Green, Blue) Infrared (IR) Red-free(RF) Autofluorescence du fond d'œil FAF (B-AF, G-AF) Fundus fluorescein angiography (FFA)	Multi Colour (Red, Green, Blue) Infrared (IR) Red-free (RF) Fundus autofluorescence (FAF) (B-AF, G-AF) Fundus fluorescein angiography (FFA) Indocyanine green angiography (ICGA)
Field of view	One-click capture. Optical zoom. 135° WA / 90° HD / 45° UHD with no lens change.		
Automated montage	Up to 240° in a mosaic of 2 to 9 images.		
Minimum pupil size	2 mm		
Resolution	5 µm		
Eye fixation	Movable internal fixation target. Flexible external target.		
Adjustment range	-35D / +50D		
Included software	Patient management. Retinal examination and annotations. Multiple workstations. DICOM compatible.		
Retinal assistant*	Detection of 20 pathologies. Offline mode available. Unlimited use licence.		
Cellular and blood flow assistant*	High-magnification imaging (8°). Cone density quantification. Blood flow velocity measurement.		
Included equipment	Computer, monitor.		
Accessories	Table, printer.		
Power supply	Voltage: AC 100–240 V. Power consumption: max 200 VA.		
Dimensions	600 mm x 440 mm x 1120 mm		
Weight	130 kg (with table)		

*: available on request

The Apollo CSLO, CRO and CRO PLUS fundus cameras, intended for ophthalmic applications, are Class IIa medical devices designed and manufactured by MICROCLEAR and distributed by QUANTEL MEDICAL, part of the Lumibird Medical group. Their conformity assessment was carried out by the notified body SGS Belgium NV "CE 1639". They are intended for healthcare professionals for the diagnosis of certain ocular conditions. For the proper use of these products, it is recommended to follow the indications and contraindications detailed in the user manual. Advertising document intended for healthcare professionals. – Date of creation: October 2025

Manufacturer
Suzhou MicroClear Medical Instruments Co., Ltd
Suite 1601-1602, G2 Building, No. 88 Jinhu Avenue,
Suzhou Industrial Park, Suzhou, Jiangsu P.R.China
Tél. : +86-512-67067163

Distributor
Quantel Medical, groupe Lumibird Medical,
1, rue du Bois Joli - CS40015
63808 Cournon d'Auvergne – FRANCE
Tél. : +33 (0)4 73 745 745

