



Dr Valentine Saunier

Bordeaux University Hospital, France

1

Clinical examination

2

Meibum expression

3

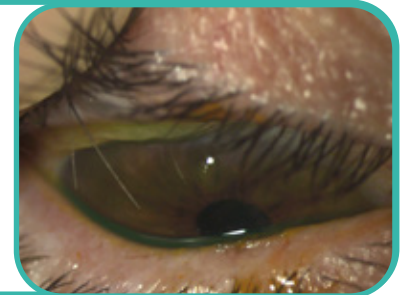
Meibography

4

Treatment

Anamnesis

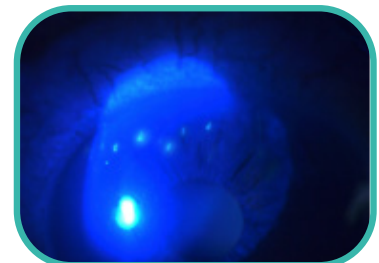
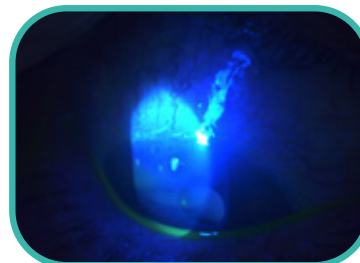
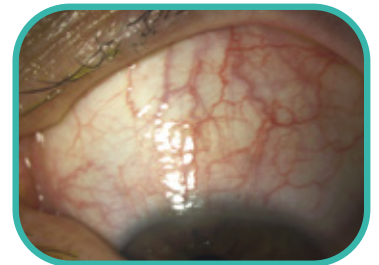
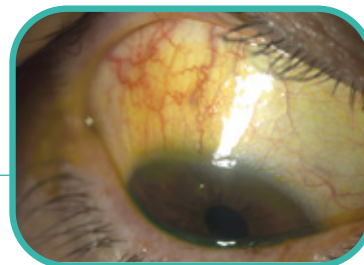
- 52-year-old woman
- Second opinion for bilateral dry eye syndrome
- Medical history: thyroidectomy, levothyroxine
- FS: gritty feeling OD OS, redness



1 Clinical examination

Slit-lamp examination

OD		OS
10/10	BCVA	10/10
Superior	CH	Superior
OXF 1 + filaments	SPK	OXF 1 + filaments
+	MGD	+
Stade 1	MGA	Stade 1
Papillae	CONJUNCTIVA	Papillae

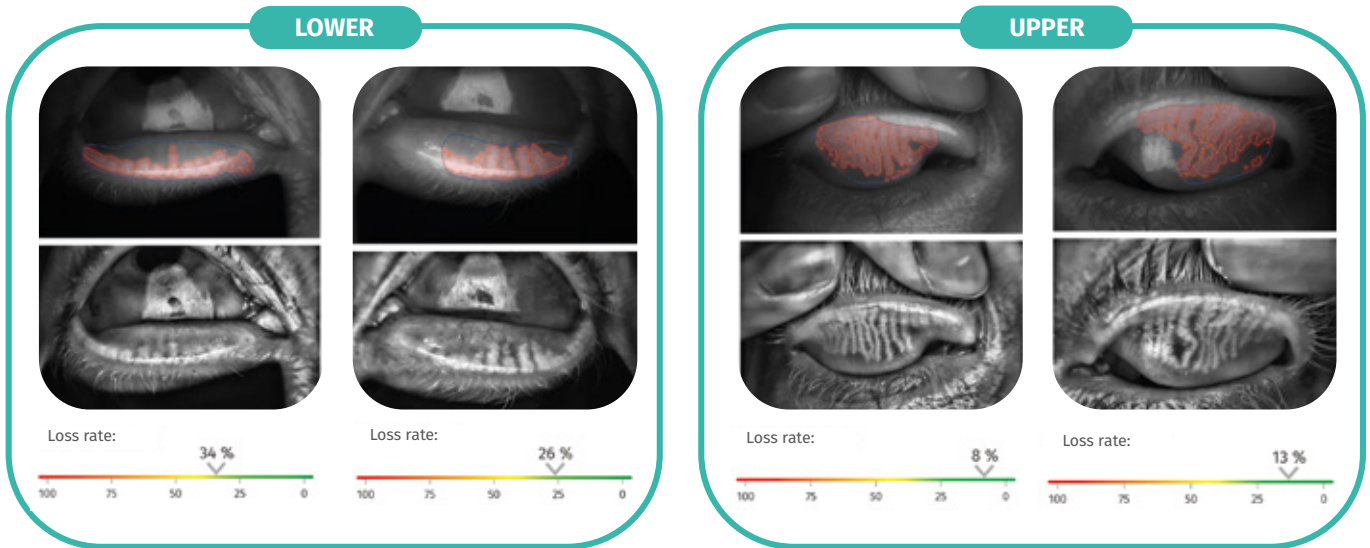


2 Meibum expression

- Meibum expression using forceps
- Thick meibum
- Minimal obstruction

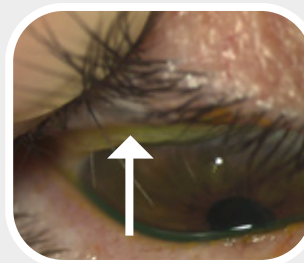


3 Meibography



DIAGNOSIS

- Theodore's superior limbic keratoconjunctivitis
- + Meibomian gland dysfunction (MGD)



Conjunctivochalasis



4 Treatment

- ▶ **First-line medical treatment:** MGD treatment, local corticosteroid therapy
Cyclosporine or tacrolimus if good response to corticosteroids
- ▶ **Second-line surgical treatment:** Superior conjunctival lifting.

THEODORE'S SUPERIOR LIMBIC KERATOCONJUNCTIVITIS

- Mostly affects women aged 35 to 55
- Associated with a thyroid disorder in 1/3 of cases
- Papillary conjunctivitis/superior conjunctival hyperaemia associated with SPK ± filamentary keratitis in 1/3 of cases
- The meibography confirmed clear associated meibomian gland dysfunction (MGD) requiring care to prevent foreign body sensation.